



Tourism Accessibility Updates

Ramps & Stairs



Ramp Installation

Ramps provide a safe and easy way for people with mobility impairments, such as those who use wheelchairs, to enter and exit buildings and navigate their surroundings independently. A ramp is a structure that connects two different levels. Large ramps can be used to connect a lower level to an upper level in a building, or a small ramp over a door threshold.

BC Building Code Specifications

- Ramp width must be at least 1500 mm with a firm, stable, non-slip surface
- Slope: 1:12 (8.33%) up to 9 m; 3 m preferred; 1:20 (5%) recommended
- Max cross slope: 1:50 (2%); ramps exposed to water must drain properly
- Landings: 1500 x 1500 mm, with 600 mm extension if door opens onto landing, 300 mm if away
- Contrast strips required at top and bottom of ramp for visibility
- Intermediate landings (1500 mm wide) needed every 9 m
- Curb or barrier required if ramp is not at ground level (curb min 75 mm or barrier max 100 mm from surface)
- Handrails are required on all ramps

Additional considerations for universal accessibility view CAN/ASC B156.

Learn more: travelnbc.com/accessibility



Tourism Accessibility Updates

Ramps & Stairs



Ramp Curb Barrier

A ramp curb / barrier provides additional support and safety for people with mobility impairments as they use the ramp, preventing falls and other accidents. A curb 75 mm high or a solid barrier is recommended on either side of ramps for persons using mobility aids, in order to act as a safety stop for the front wheels of wheelchairs, scooters and other mobility devices. Edging can be engineered into the ramp design or be an add-on attachment to existing ramps.

BC Building Code Specifications

- If not at ground level or adjacent to wall, curb minimum 75 mm high or raised barrier or rail max 100 mm from ramp surface

Additional considerations for universal accessibility view CAN/ASC B156.

Learn more: travelnbc.com/accessibility



Tourism Accessibility Updates

Ramps & Stairs



Heated Traction Mat

Heated traction mats on ramps melt snow and ice, improving traction and preventing slips and falls for people with mobility impairments, especially during cold and snowy weather conditions. At entrance foyers, stairs, ramps or other high traffic areas outdoors, consider the use of a heated traction mat or radiant heating to automatically melt and clear ice and snow, where timely maintenance and snow clearing may be problematic.



Make note of proper drainage in the area to support snow melt runoff. This method also frees up space that was previously needed to put snow that had been shovelled from walkways, stairs, etc., creating great mobility and fewer obstacles for patrons accessing the building.

Learn more: travelnbc.com/accessibility



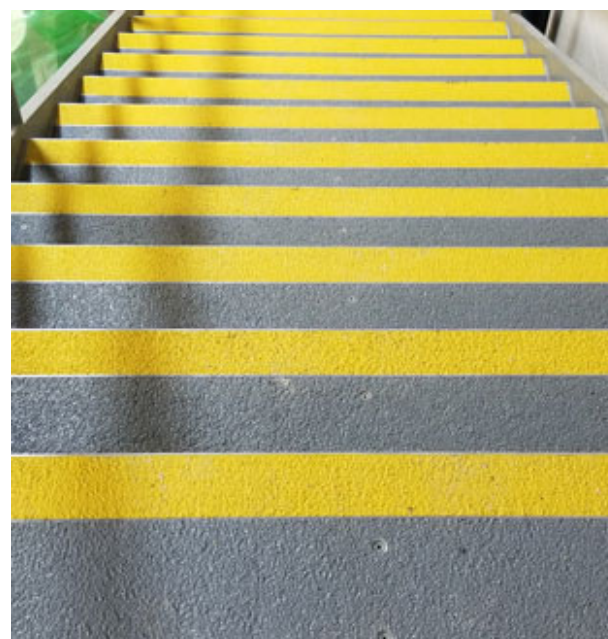
Tourism Accessibility Updates

Ramps & Stairs



Highlighted Edges on Stairs

Highlighting edging increases visibility and reduces the risk of tripping and falling on stairs, particularly in low-light conditions or for people with visual impairments. Brightly coloured paint or tape can be used to highlight the edge from their surroundings. This method can be applied to ramps, stairs, doors, tables, hallways, walkways, parking areas and other objects that may cause tripping or bumping hazards.



The CSA specifications for highlighting edges for stairs are:

- Stripe should be 40-60 mm deep horizontal strip full width of tread, colour contrasted

Learn more: travelnbc.com/accessibility